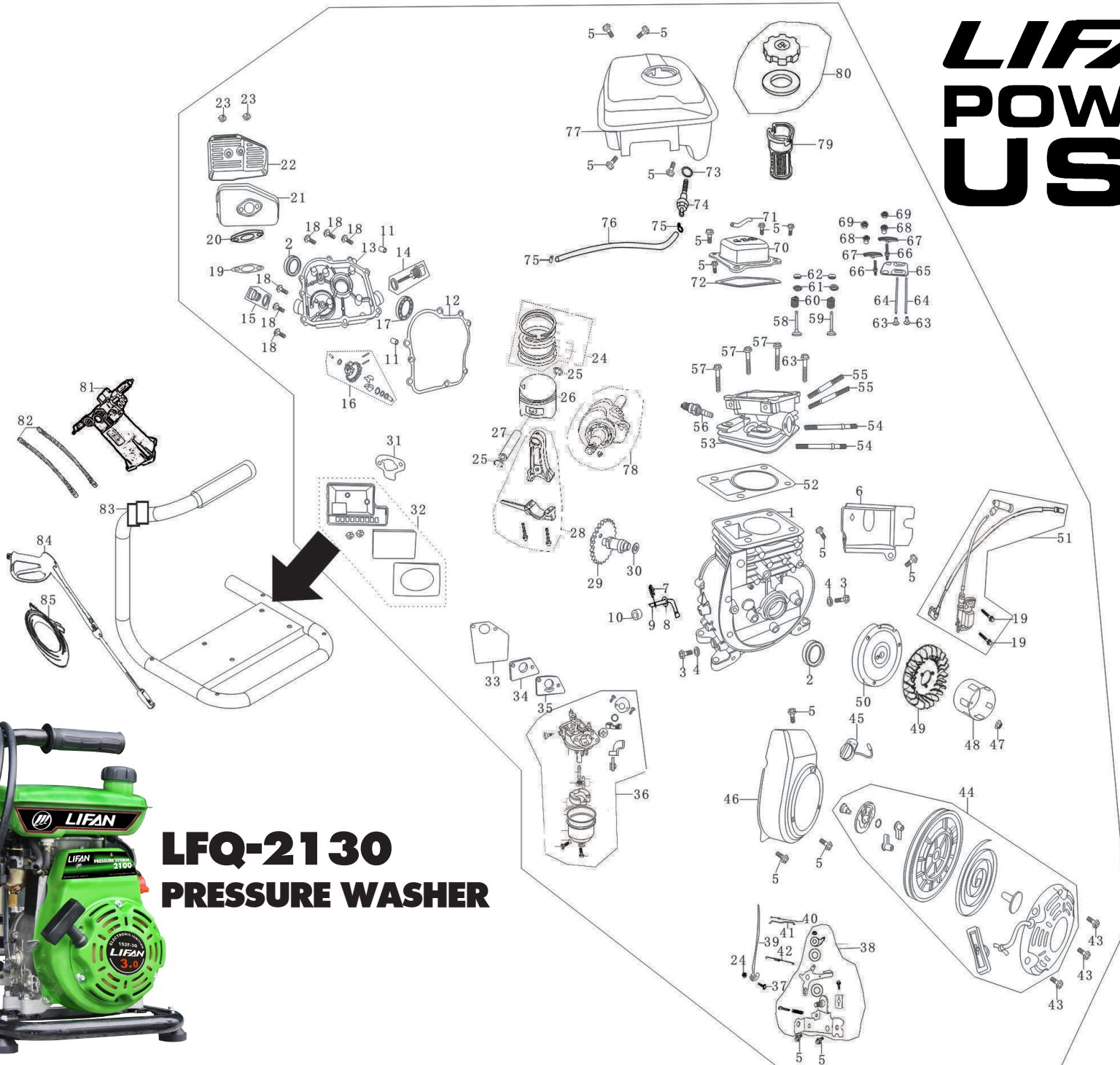


# LIFAN POWER USA



**LFQ-2130  
PRESSURE WASHER**



S/N	Part No.	Description	Qty
1	11110-A0430-0001	Crankcase	1
2	11120-A0410-0002	Oil seal 17X30X6 ,crankshaft	2
3	11115-A0710-0001	Drian plug	2
4	11116-A0710-0001	Washer	2
5	T151-0002	Bolt M6X12	15
6	19121-A0430-0001	Flow guard	1
7	26112-A0410-0001	Keeper,sway bar	1
8	26113-A0410-0001	Washer,sway bar	1
9	26111-A0410-0001	sway bar	1
10	11130-A0410-0001	Oil seal,sway bar	1
11	11113-A0710-0001	Set pin $\phi$ 8X14	2
12	11114-A0430-0001	Gasket,crankcase	1
13	11211-A0430-0001	Crankcase cover	1
14	15510-A0710-0001	Dipstick sub-assy	1
15	15610-A0710-0001	Oil plug sub-assy	1
16	25100-A0410-0001	Driven gear sub-assy,governor	1
17	T910-0006	Bearing 6203	1
18	T151-0021	Bolt M6X28	8
19	18215-BT2Y0-0001	Gasket,exhaust port	1
20	18221-A0430-0001	Muffler block	1
21	18000-A0430-0001	Muffler	1
22	18130-A0430-0001	Muffler hood	1
23	T311-0002	Nut M6	3
24	13400-A0410-0001	Piston ring set	1
25	13313-A0410-0001	Circlip,piston pin	2
26	13311-A0410-0001	Piston	1
27	13312-A0410-0001	Piston pin	1
28	13120-A0410-0001	Connecting rod	1
29	14100-A0410-0001	Camshaft	1
30	14114-A0410-0001	Washer,camshaft	1
31	17113-A0410-0001	Gasket,air cleaner	1
32	17100-A0430-0001	Housing,air cleaner	1

S/N	Part No.	Description	Qty
33	17219-A0430-0001	Gasket,intake port	1
34	16120-A0430-0001	Connecting block	1
35	16113-A0430-0001	Gasket, carburetor	1
36	16100-A0430-0001	Carburetor assy	1
37	26116-A0710-0001	Lock bolt	1
38	26200-A0430-0001	Mount, governor	1
39	26114-A0430-0001	Governor arm	1
40	26118-A0410-0001	Assistant spring, governor	1
41	26115-A0410-0001	Pull-rod, governor	1
42	26117-A0410-0001	Return spring	1
43	T151-0023	Bolt M6x8	3
44	23100-A0430-0003	Recoil starter	1
45	27300-A0410-0001	Engine switch	1
46	192110-BT2Y0-0005	Fan hood sub-assy	1
47	23317-A0410-0001	Nut M12x1.25	1
48	23316-A0430-0001	Starting flange	1
49	19111-A0410-0001	Fan, flywheel	1
50	23300-A0430-0001	Flywheel	1
51	27200-A0430-0001	Ignition coil sub-assy	1
52	12120-A0430-0001	Gasket, cylinder head	1
53	12100-A0430-0001	Cylinder head Assy	1
54	18214-A1820-0001	Stud M6x90	2
55	17218-A0430-0001	Stud M5x90	2
56	27100-A0410-0004	Spark plug 255	1
57	12118-A0430-0003	Bolt	4
58	14411-A0430-0001	Intake valve	1
59	14412-A0430-0001	Exhaust valve	1
60	14414-A0430-0001	Valve spring	2
61	14415-A0410-0001	Spring seat, valve	2
62	14416-A0430-0001	Cap	2
63	14315-A0430-0001	Tappet	2

S/N	Part No.	Description	Qty
64	14210-A0430-0001	Pusher	2
65	14220-A0430-0001	Pusher guide	1
66	14313-A0430-0001	Adjusting bolt for valve gap	2
67	14310-A0430-0001	Valve rocker	2
68	14312-A0430-0001	Sleeve	2
69	14314-A0710-0001	Lock nut	2
70	12200-A0430-0001	Cylinder head cover Assy	1
71	19143-A0430-0001	Air duck	1
72	12120-A0430-0001	Gasket, cylinder head cover	1
73	16630-A0710-0001	Seal ring, outlet nipple	1
74	16630-A0710-0001	Outlet nipple	1
75	16622-A0710-0005	Pipe clamp	2
76	16623-A0721-0001	Outlet pipe	1
77	16510-A0430-0031	Fuel tank	1
78	13110-A0430-0006	Crankshaft sub-assy	1
79	16610-A0430-0001	Filter cup	1
80	16400-A2010-0005	Fuel filler cap sub-assy	1
81	55600-E1110-0002	High pressure pumps	1
82	55511-E4310-0001	High pressure hose	2
83	55100-E1110-0002	Wand assy	1
84	55550-E8310-0001	Frame	1
85	55520-E1110-0002	Outlet hose	1

**LIFAN**  
**POWER**  
**USA**

2205 Industrial Park Road, Van Buren, AR 72956  
www.lifanpowerusa.com (866) 471-7464