

THE **JOB PRO**[®] by **Mi-T-M**[®]

8650 Enterprise Drive, Peosta IA 52068
563-556-7484 / Fax 563-556-1235
www.mitm.com

PARTS LIST FOR ***JP-3004-0ME3*** ***(AFTER SERIAL #10381724)***

Motor Horsepower:
Pump Oil Grade:
Pump Oil Capacity:
Nozzle Size:

8 H.P.
Mi-T-M Pump Oil #AW-4085-0016
14 oz.
4.5

This Parts Listing has been compiled for your benefit. You can be assured your Mi-T-M Cold Water Pressure Washer was constructed and designed with quality and performance in mind using over 25 years experience in the pressure washer business. Each component has been rigorously tested to insure the highest level of acceptance.

The contents of this Parts Listing are based on the latest product information available at the time of publication. Mi-T-M reserves the right to make changes in price, color, materials, equipment, specifications or models at any time without notice.

WARNING

THIS IS A PROFESSIONAL HIGH PRESSURE, COLD WATER PRESSURE WASHER. CAUTION SHOULD BE OBSERVED WHEN USING OR REPAIRING THIS UNIT! READ AND FOLLOW THE SAFETY WARNINGS LISTED BELOW BEFORE ATTEMPTING ANY REPAIRS ON THIS PRESSURE WASHER!

SAFETY WARNINGS

1. NEVER alter or modify the equipment. Be sure any accessory items and system components being used will withstand the pressure developed. Use only genuine Mi-T-M parts for repair of your pressure washer. Failure to do so can cause hazardous operating conditions and will VOID warranty.
2. NEVER make adjustments on machinery while the unit is connected to the engine without first removing the ignition cable from the spark plug. Turning over the machinery by hand during adjustment or cleaning might start the engine and machinery with it, causing serious injury to the operator.
3. Know how to stop and bleed pressures quickly. Be thoroughly familiar with controls.
4. Before servicing the unit, turn unit off, relieve the water pressure and allow the unit to cool down. Do not make repairs while the unit is running. Service in a clean, dry, flat area. Block the wheels to prevent the unit from moving. Be especially careful to properly dispose of any flammable materials.
5. After testing the machine, DO NOT leave the pressurized unit unattended. Shut off the unit and release trapped pressure before leaving.

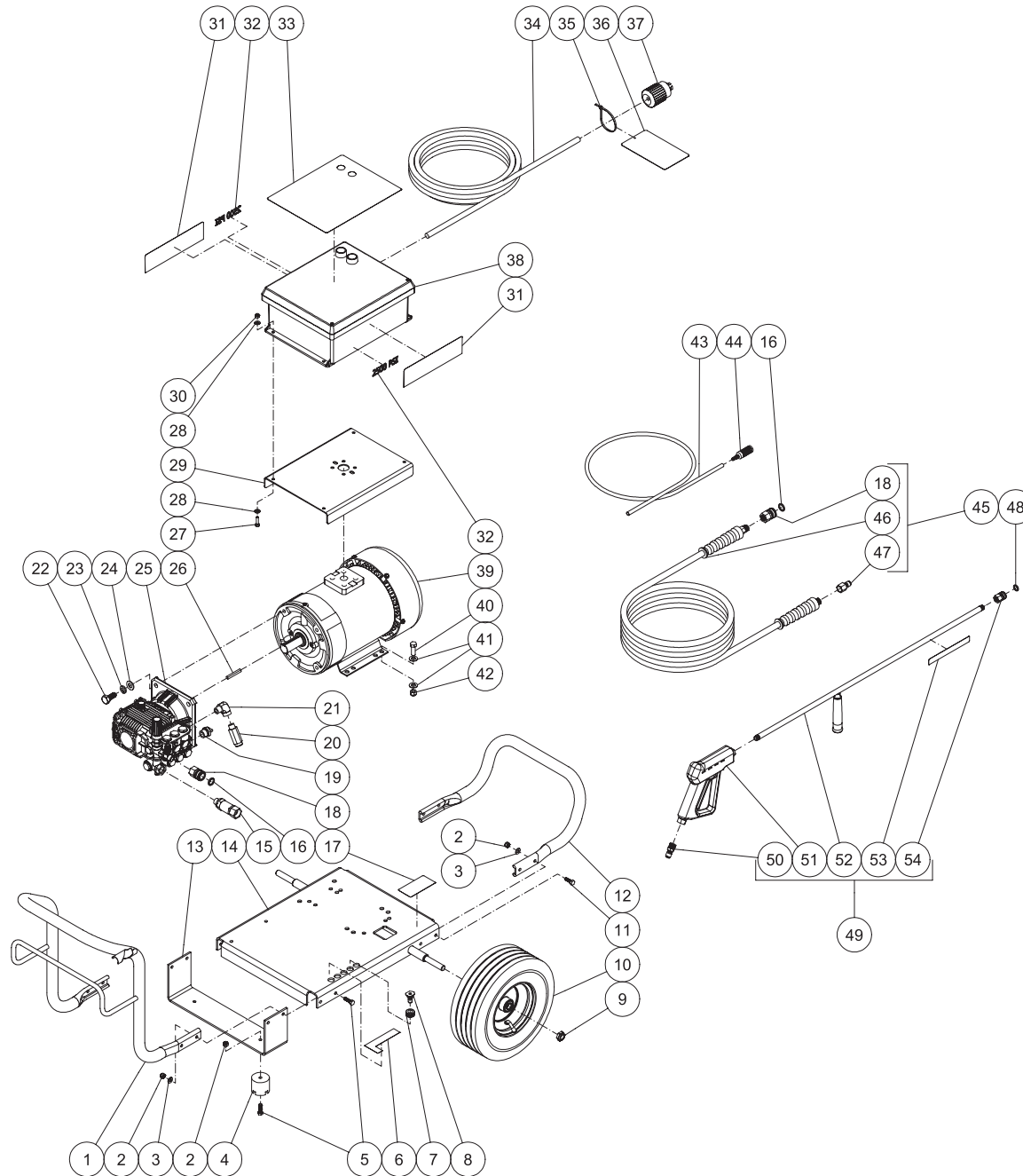
Table of Contents

SPECIFICATIONS.....	3
FRAME ASSEMBLY FOR JP-3004-0ME3 (AFTER SERIAL #10381724)	4
PUMP ASSEMBLY (3-0207)	6
UNLOADER ASSEMBLY (8-0455)	8
GUN ASSEMBLY (16-0001)	10
CONTROL BOX ASSEMBLY FOR JP-3004-0ME3 (230 VOLT)	12
WIRING SCHEMATIC FOR JP-3004-0ME3 (230 VOLT)	14
WIRING DIAGRAM FOR JP-3004-0ME3 (230 VOLT)	15

SPECIFICATIONS

MODEL NUMBER	JP-3004-0ME3
Operating Pressure (PSI/Bar):	3000/206.8
High Pressure Nozzle:	4.5
Water Volume (GPM/lpm):	3.9/14.8
Motor:	Totally enclosed fan cooled, circuit breaker thermal overload protection, 35ft. power supply cord with Ground Fault Circuit Interrupter (GFCI)
Horsepower	8.0
Voltage	230/460
Phase	Three
Amps	20/10
Pump:	Direct Driven, Oil Bath, Triplex Piston
Oil Type	Mi-T-M Pump Oil #AW-4085-0016
Oil Capacity (oz./liters)	14/41
Plungers	Ceramic Coated
Manifold	Forged Brass
Valves	Stainless Steel
Unloader	Adjustable
Heat Dump Valve	Relieves heated water during unloader bypass stage
Detergent Injector	Adjustable low pressure down stream from pump
Unit Net Weight (lbs/Kg)	206/94
Unit Shipping Weight (lbs/Kg)	620/118
Unit Net Dimension (in/cm)	44Lx26Wx27H/112Lx66Wx69H
Unit Shipping Dimension (in/cm)	48Lx30Wx34H/122Lx76Wx86H

FRAME ASSEMBLY FOR JP-3004-0ME3 (AFTER SERIAL #10381724)

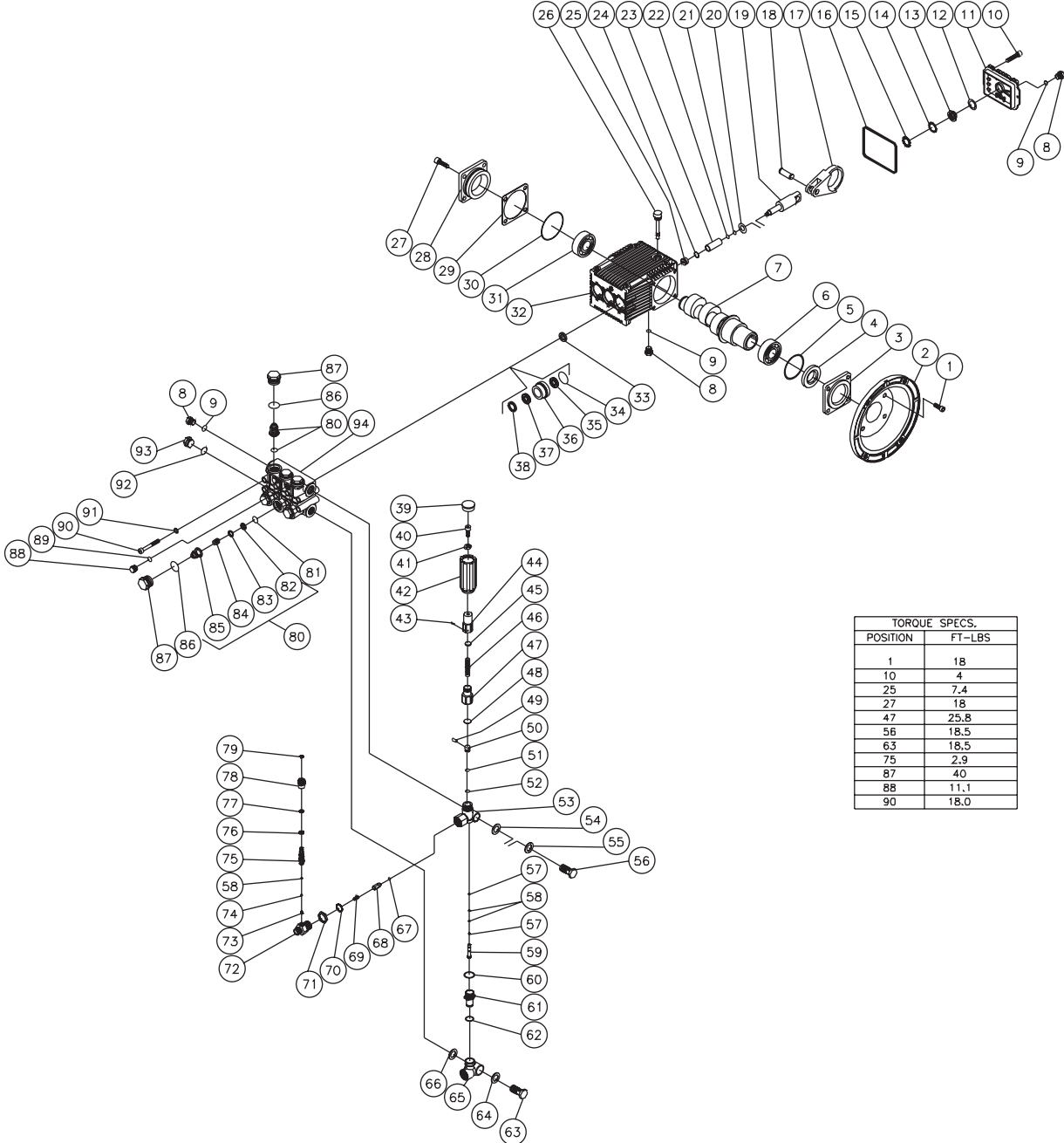


JP-3004-0ME3-041309-RSW

FRAME ASSEMBLY FOR JP-3004-0ME3

REF. #	DESCRIPTION	PART #	QTY.	REF. #	DESCRIPTION	PART #	QTY.	REF. #	DESCRIPTION	PART #	QTY.
1	Front Handle	7-0101A01	1	17	Decal- Data Plate	N/A	1	36	Hang Tag- Risk of Electrocution	34-1035	1
2	Locknut	30-0157	10	18	Quick Connect Socket	17-0004	2	37	Plug	32-0037	1
3	Washer	28-0003	8	19	Thermal Relief Valve	22-0005	1	38	Electric Box Assy	-	1
4	Isolator	14-0008	2	20	Safety Valve	22-0376	1	39	Motor 8HP	2-0117	1
5	Bolt	27-0068	6	21	Elbow	24-0105	1	40	Bolt	27-0167	4
6	Decal- Nozzle	34-0500	1	22	Bolt	27-0217	4	41	Washer	28-0005	8
7	Grommet	33-0002	5	23	Lockwasher	29-0010	4	42	Locknut	30-0161	4
8	Nozzle- 00045	18-0033	1	24	Washer	28-0006	4	43	Detergent Hose *(Four Feet Required)	15-0021	1
-	Nozzle- 14045	18-0039	1	25	Pump	3-0207	1	44	Detergent Strainer	19-0050	1
-	Nozzle- 25045	18-0060	1	26	Key	43-0078	1	45	Hose Assembly (Inc. 18, 46, 47)	851-0007	1
-	Nozzle- 6540	18-0148	1	27	Bolt	27-0016	4	46	Hose	15-0004	1
9	Nut	30-0117	2	28	Washer	28-0002	8	47	Quick Connect Plug	17-0006	1
10	Wheel	14-0006	2	29	Support Plate	20-0547A01	1	48	O-ring (Replacement Only)	25-0122	1
11	Bolt	27-0067	4	30	Locknut	30-0155	4	49	Gun/Wand Assembly (Inc. 48-52)	851-0095	1
12	Rear Handle	7-0175A01	1	31	Decal- Job Pro	34-2150	2	50	Quick Connect Plug	17-0005	1
13	Underbracket	13-0137A01	1	32	Decal- "3000" White Die Cut	34-2214	2	51	Gun	16-0001	1
14	Baseplate	5-0186A01	1	33	Decal- Warning/Caution/Operation	N/A	1	52	Wand w/ 36" Handle	16-0418	1
15	Inlet Filter	19-0206	1	34	Cord *(Fourty Feet Required)	32-0023	1	53	Decal- Warning: Risk of Injection	34-1253	1
16	O-ring	25-0123	2	35	Cable Tie	33-0022	1	54	Quick Connect Socket	17-0001	1
*Must Order in One Foot Lengths											

PUMP ASSEMBLY (3-0207)



TORQUE SPECS.	
POSITION	FT-LBS
1	18
10	4
25	7.4
27	18
47	25.8
56	18.5
63	18.5
75	2.9
87	40
88	11.1
90	18.0

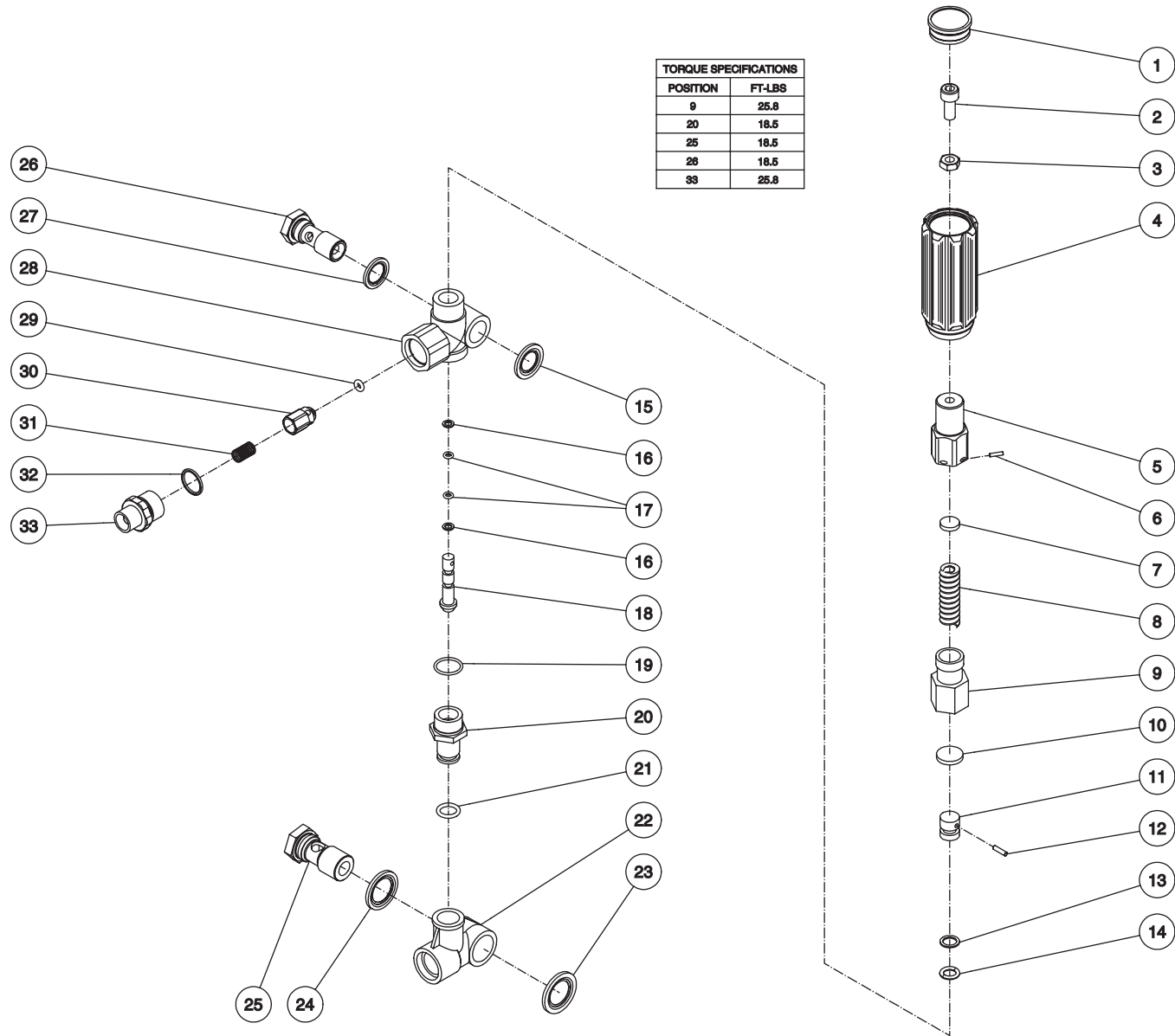
3-0207-030603-JJT

PUMP ASSEMBLY (3-0207)

REF. #	DESCRIPTION	PART #	QTY.	REF. #	DESCRIPTION	PART #	QTY.	REF. #	DESCRIPTION	PART #	QTY.
1	Bolt	27-8434	4	34	O-ring	25-0384	3	69	Spring	49-0123	1
2	Flange	38-0059	1	35	Low Pressure Seal (See 70-0177)	N/A Sep.	3	70	O-ring	25-0372	1
3	Shaftcover	46-0713	1	36	Packing Retainer	46-0708	3	71	Tightener Nut	8-0497	1
4	Oil Seal	26-0194	1	37	V-Packing (See 70-0177)	N/A Sep.	3	72	Injector Adapter	8-0498	1
5	O-ring	25-0397	1	38	Support Ring (See 70-0178)	N/A Sep.	3	73	Detergent Injector Spring (See 70-0196)	N/A Sep.	1
6	Bearing	48-0062	1	39	Cap	7-0142	1	74	Ball (See 70-0196)	N/A Sep.	1
7	Crankshaft	46-0919	1	40	Bolt	27-8433	1	75	Barb	8-0499	1
8	Plug	39-0102	1	41	Nut	30-3025	1	76	O-ring (See 70-0196)	N/A Sep.	1
9	O-ring	25-0325	3	42	Unloader Knob	7-0141	1	77	O-ring (See 70-0196)	N/A Sep.	1
10	Bolt	27-8401	6	43	Pin	8-0477	1	78	Adjustable Detergent Knob	7-0152	1
11	Crankcase Cover (Inc. 8-9, 12-15)	46-0719	1	44	Adjustment Barrel	8-0476	1	79	Snap Ring (See 70-0196)	N/A Sep.	1
12	O-ring	25-0370	1	45	Spring Button	8-0475	1	80	Single Valve Assembly (Inc. 82-85) (See 70-0319)	N/A Sep.	6
13	Oil Sight Glass	46-0670	1	46	Spring	49-0132	1	81	O-ring	25-0386	6
14	Reflector	46-0824	1	47	Guide Spring	8-0474	1	82	Valve Seat (See 70-0319)	N/A Sep.	6
15	Retainer	46-0671	1	48	Spring Button	8-0445	1	83	Valve Plate (See 70-0319)	N/A Sep.	6
16	O-ring	25-0398	1	49	Pin	8-0444	1	84	Valve Spring (See 70-0319)	N/A Sep.	6
17	Connecting Rod- Aluminum	46-0896	3	50	Poppet	8-0443	1	85	Valve Cage (See 70-0319)	N/A Sep.	6
-	Connecting Rod- Bronze	46-0922	3	51	Back-up Ring (See 8-0456)	N/A Sep.	1	86	O-ring	25-0160	6
18	Piston Pin	46-0698	3	52	O-ring (See 8-0456)	N/A Sep.	1	87	Valve Cap	39-0095	6
19	Plunger Rod	46-0699	3	53	Unloader Body	8-0451	1	88	Plug	39-0096	2
20	Washer	46-0700	3	54	Washer	8-0449	1	89	O-ring	25-0387	2
21	Back-up Ring	25-0404	3	55	Washer	8-0450	1	90	Bolt	27-8440	8
22	O-ring	25-0382	3	56	Adapter (See 8-0456)	N/A Sep.	1	91	Lockwasher	29-0154	8
23	Piston	46-0701	3	57	Back-up Ring	25-0395	2	92	O-ring	25-0372	1
24	Gasket	26-0191	3	58	O-ring	25-0371	3	93	Plug	39-0088	1
25	Nut	30-6020	3	59	Piston	8-0442	1	94	Manifold	46-0711	1
26	Oil Dipstick	39-0090	1	60	O-ring	25-0389	1		Oil Seal Kit (Inc. 4, 5, 16, 30, 33)	70-0337	
27	Bolt	27-8884	4	61	Nipple	8-0441	1		High Pressure Seals Kit (Inc. 3 each 34-35, 37)	70-0177	
28	Support Bearing Cap	46-0703	1	62	O-ring (See 8-0456)	N/A Sep.	1		Support Rings Kit (Inc. 3 each 38)	70-0178	
29	Shim- 0.1mm (Qty. Varies 1-3)	46-0704	-	63	Adapter	8-0438	1		Valve Kit (Inc. 6 each 81-85)	70-0319	
-	Shim- 0.2mm (Qty. Varies 1-3)	46-0705	-	64	Washer	8-0439	1		Unloader Kit (Inc. 39-69)	8-0456	
30	O-ring	25-0380	1	65	Inlet Bypass Adapter	8-0437	1		Unloader Repair Kit (Inc. 51, 52, 57, 58, 60, 62)	70-0180	
31	Bearing	48-0072	1	66	Washer	8-0440	1		Injector Kit (Inc. 70-79)	70-0196	
32	Crankcase	46-0811	1	67	O-ring	25-0437	1		Piston Kit (Inc. 3 each 20-25)	70-0352	
33	Oil Seal	46-0931	3	68	Check Valve	8-0454	1				

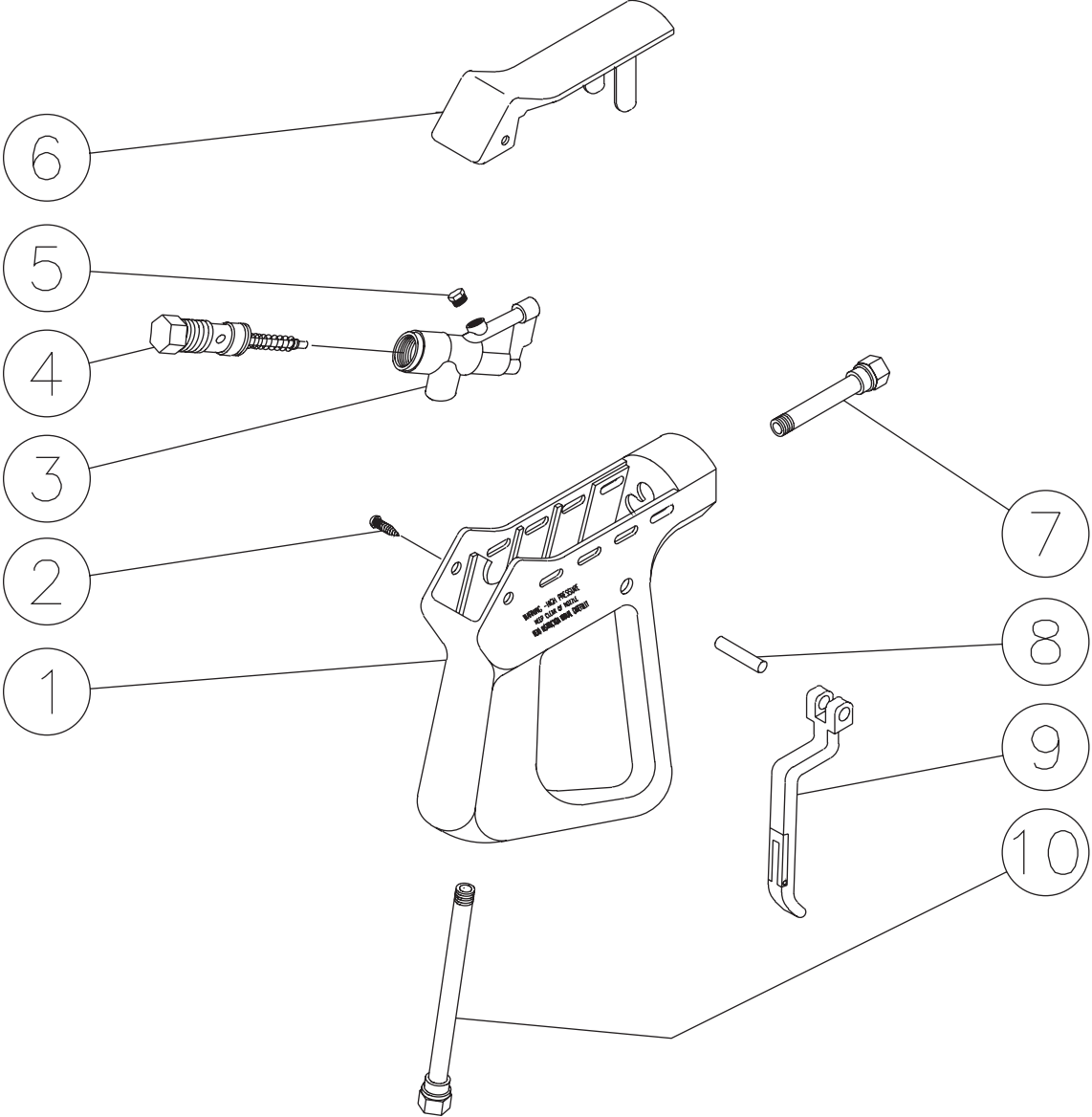
UNLOADER ASSEMBLY (8-0456)

TORQUE SPECIFICATIONS	
POSITION	FT-LBS
9	25.8
20	18.5
25	18.5
26	18.5
33	25.8



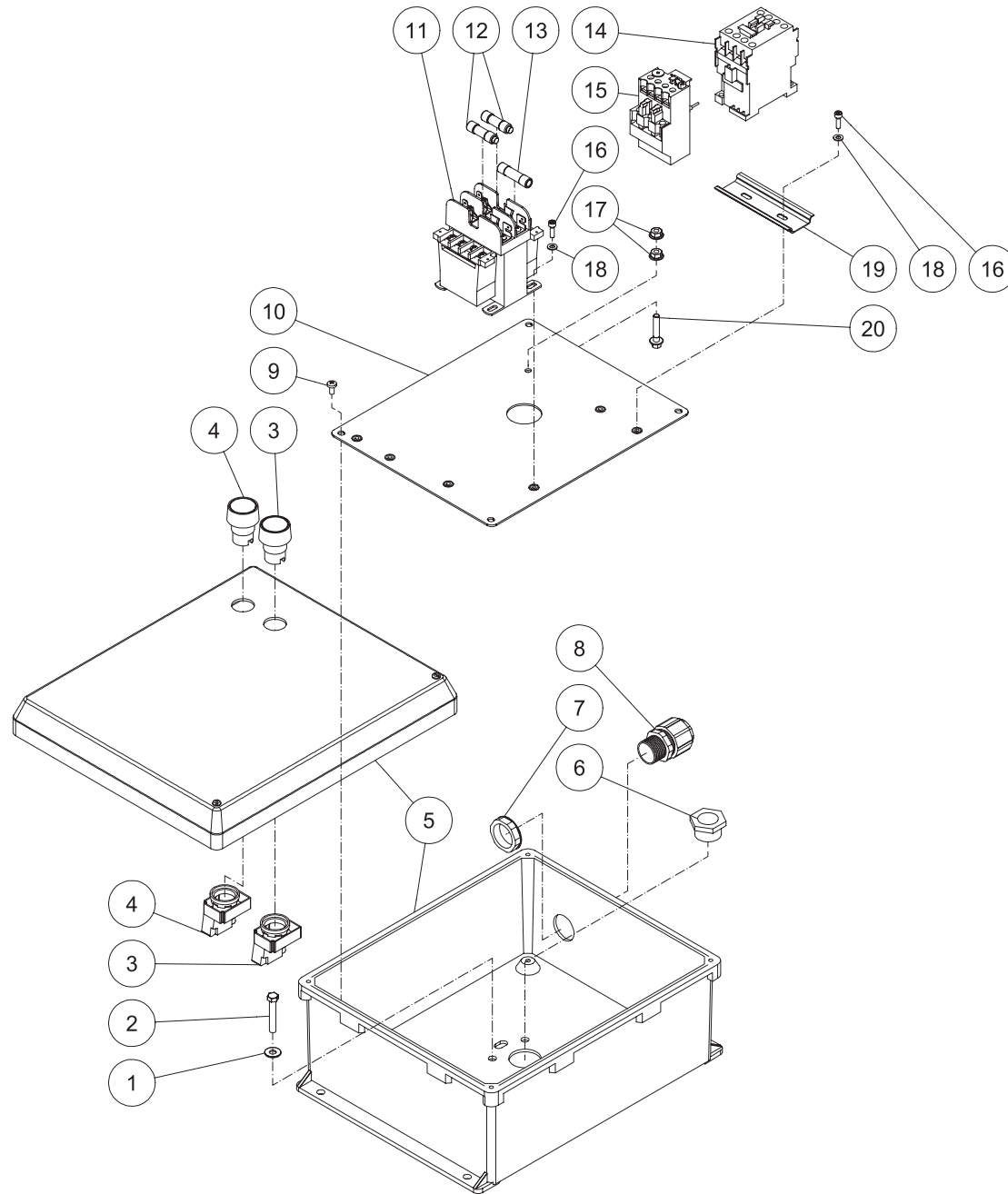
UNLOADER ASSEMBLY (8-0456)							
REF. #	DESCRIPTION	PART #	QTY.	REF. #	DESCRIPTION	PART #	QTY.
1	Unloader Cap	7-0142	1	18	Piston	8-0442	1
2	Bolt	27-8433	1	19	O-ring	25-0389	1
3	Nut	30-3025	1	20	Nipple	8-0441	1
4	Unloader Knob	7-0141	1	21	O-ring	25-0388	1
5	Adjustment Barrel	8-0476	1	22	Inlet Bypass Adapter	8-0437	1
6	Pin	8-0477	1	23	Washer	8-0439	1
7	Spring Button	8-0475	1	24	Washer	8-0440	1
8	Spring	49-0132	1	25	Adapter	8-0438	1
9	Spring Guide	8-0474	1	26	Adapter	8-0448	1
10	Spring Button	8-0445	1	27	Washer	8-0449	1
11	Poppet	8-0443	1	28	Unloader Body	8-0451	1
12	Pin	8-0444	1	29	O-ring	25-0391	1
13	Back-up Ring	25-0396	1	30	Check Valve	8-0454	1
14	O-ring	25-0390	1	31	Check Valve Spring	49-0123	1
15	Washer	8-0450	1	32	O-ring	25-0372	1
16	Back-up Ring	25-0395	2	33	Adapter Nipple	24-0159	1
17	O-ring	25-0371	2		Unloader Repair Kit (Inc. 13, 14, 16, 17, 19, 21, 29)	70-0180	

GUN ASSEMBLY (16-0001)



GUN ASSEMBLY (16-0001)			
REF. #	DESCRIPTION	PART #	QTY.
1	Plastic Housing	16-0008	1
2	Screw	27-3230	2
3	Brass Housing	16-0012	1
4	Gun Repair Kit	70-0055	1
5	Brass Plug	39-0024	1
6	Plastic Cover	16-0009	1
7	Pipe Assembly	16-0013	1
8	Trigger Pin	16-0063	1
9	Trigger/Safety Lock-off	16-0010	1
10	Pipe Assembly- Inlet	16-0016	1
	Complete Gun Assembly	16-0001	1

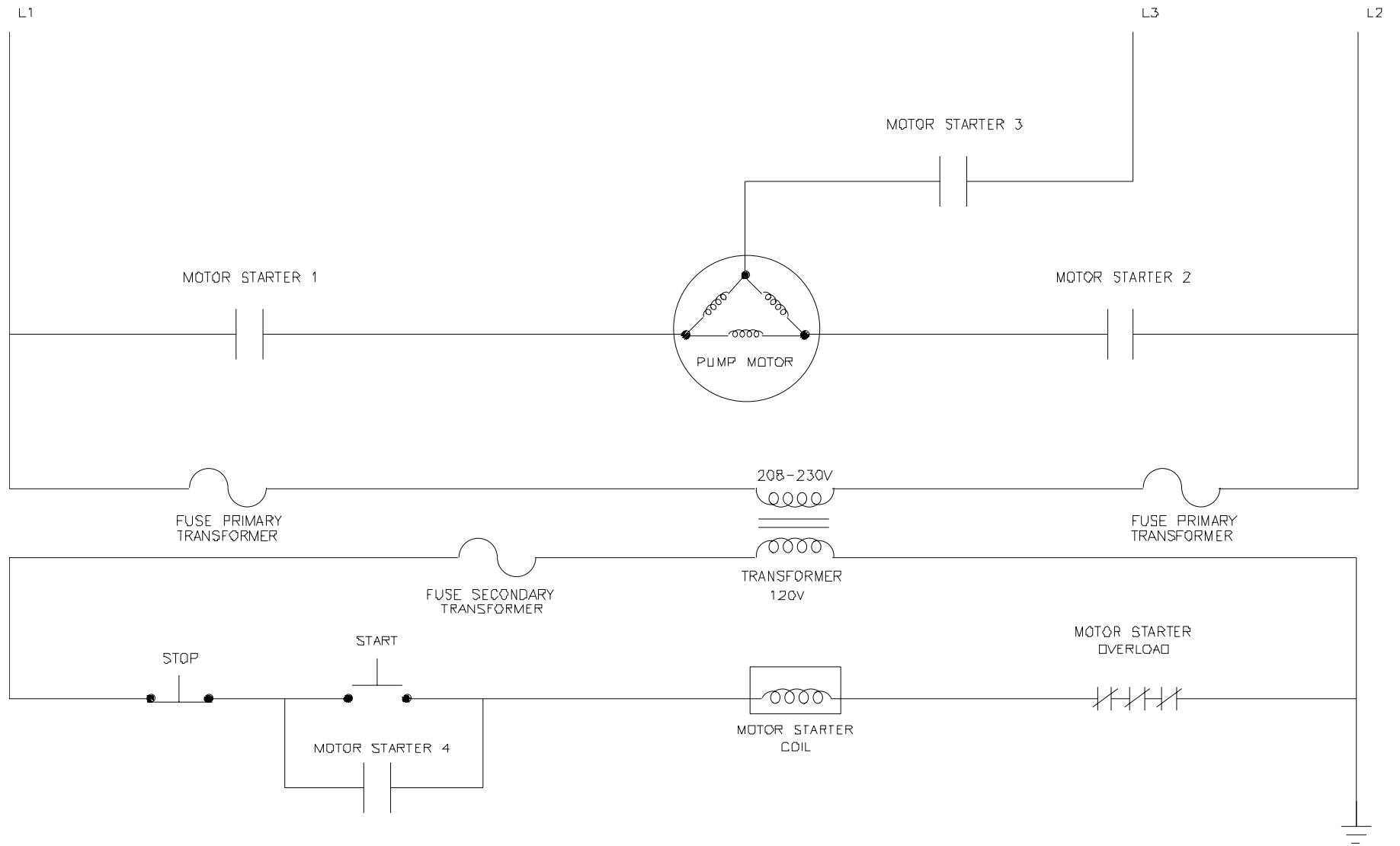
CONTROL BOX ASSEMBLY FOR JP-3004-0ME3 (230 VOLT)



JP-2503/3004-0ME3-ELECTRIC BOX ASSY 082206-JJT

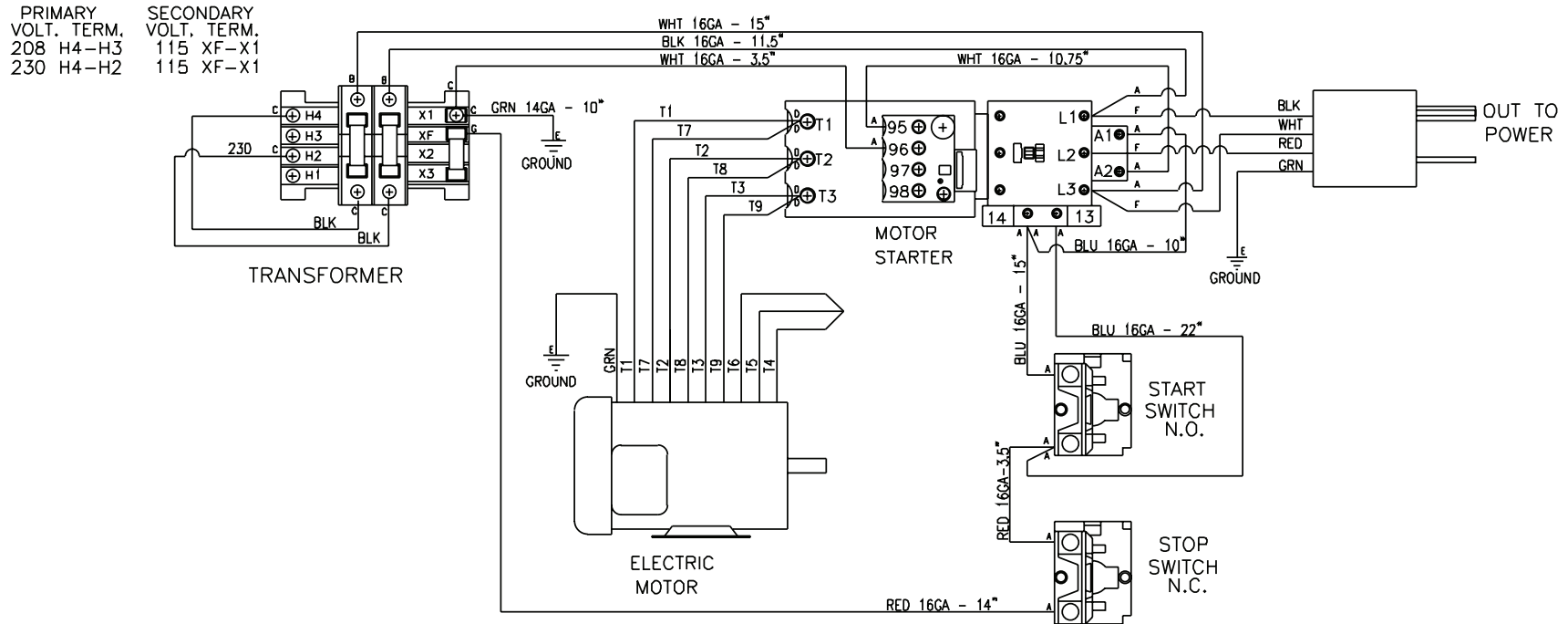
CONTROL BOX ASSEMBLY FOR JP-3004-0ME3							
REF #	DESCRIPTION	PART #	QTY	REF #	DESCRIPTION	PART #	QTY
1	Washer	28-0002	4	12	Fuse- .5A	32-0467	2
2	Bolt	27-0018	4	13	Fuse- .6A	32-0471	1
3	Switch- Green	32-0534	1	14	Contactactor (3 Pole)	32-0478	1
4	Switch- Red	32-0610	1	15	Overload Relay (18-30A)	32-0484	1
5	Electric Box	32-0683	1	16	Bolt	27-8835	4
6	Chase Nipple	32-0684	1	17	Hex Nut	30-3022	2
7	Locknut	32-0292	1	18	Washer	28-0010	4
8	Bushing	9-0046	1	19	Din Rail *(One Foot Required)	32-0316	1
9	Screw	27-8922	4	20	Bolt	27-8898	1
10	Panel- Electric	20-0557	1				
11	Transformer	32-0313	1	*Must Order in One Foot Lengths			

WIRING SCHEMATIC FOR JP-3004-0ME3 (230 VOLT)



JP-WD-0002S-041700-GJH

WIRING DIAGRAM FOR JP-3004-0ME3 (230 VOLT)



JP-WD-0002-041700-GJH

WIRING DIAGRAM (230 VOLT)			
REF. #	DESCRIPTION	PART #	QTY.
A	Terminal Insulated	32-0494	14
B	Terminal Flag Female	32-0492	2
C	Terminal Fork	32-0003	6
D	Terminal Insulated- Gray	32-0496	6
E	Terminal Ring	32-0004	3
F	Terminal Insulated- Yellow	32-0497	3
G	Terminal Fullin	32-0221	1

JP-WD-0002D-041700-GJH

